

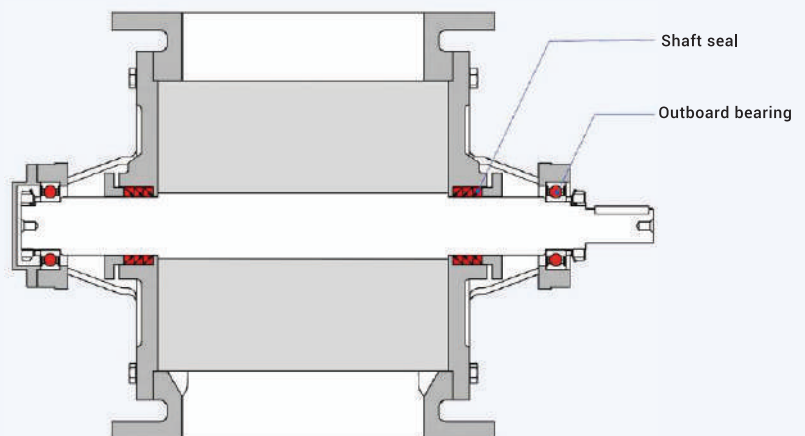
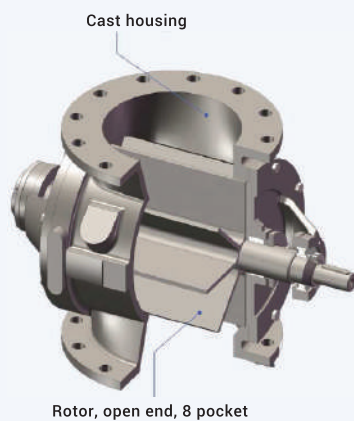


DISCHARGING AND METERING VALVE FOR POWDERS

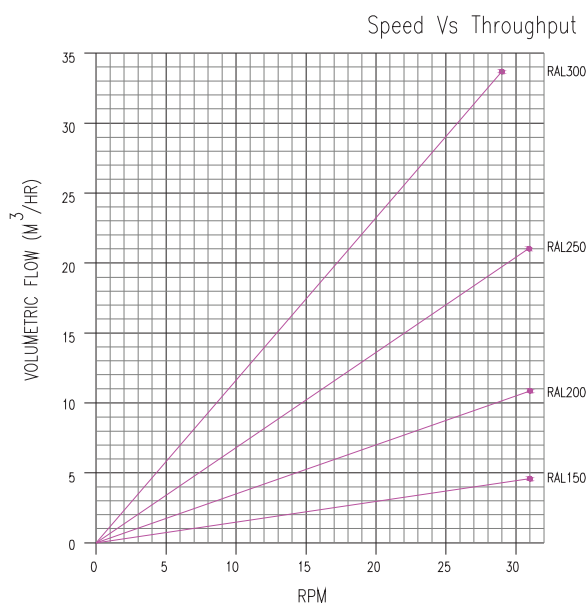
Cast Iron rotary valves rotary valves are designed for general use on pneumatic conveying systems for both metering and airlock duties, suitable for both vacuum and pressure application on a wide variety of powders and granules, with feeding shoe also suitable for feeding material into pneumatic conveying systems, operation possible without leakage gas venting.



STRUCTURES

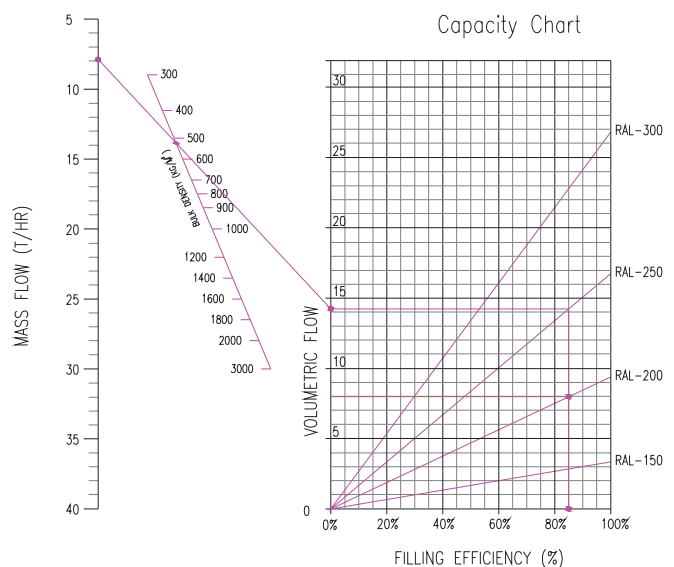


MODEL SELECTION CHART



20 RPM DEFAULT FOR RL 150/200/250/300

NOTE: THIS CHART IS PREPARED FOR THE GUIDANCE PURPOSE ONLY, CONSIDERING 100% FILLING CAPACITY



EXAMPLE: A MATERIAL WITH A BULK DENSITY OF 550KG/M³ AND REQUIRED CAPACITY OF 8.0T/HR CAN BE ACHIVED BY RL 250 & AT 86% FILLING CAPACITY WITH 20 RPM

NOTE: THIS CHART IS PREPARED FOR THE GUIDANCE PURPOSE ONLY. MAX RPM.

FEATURES

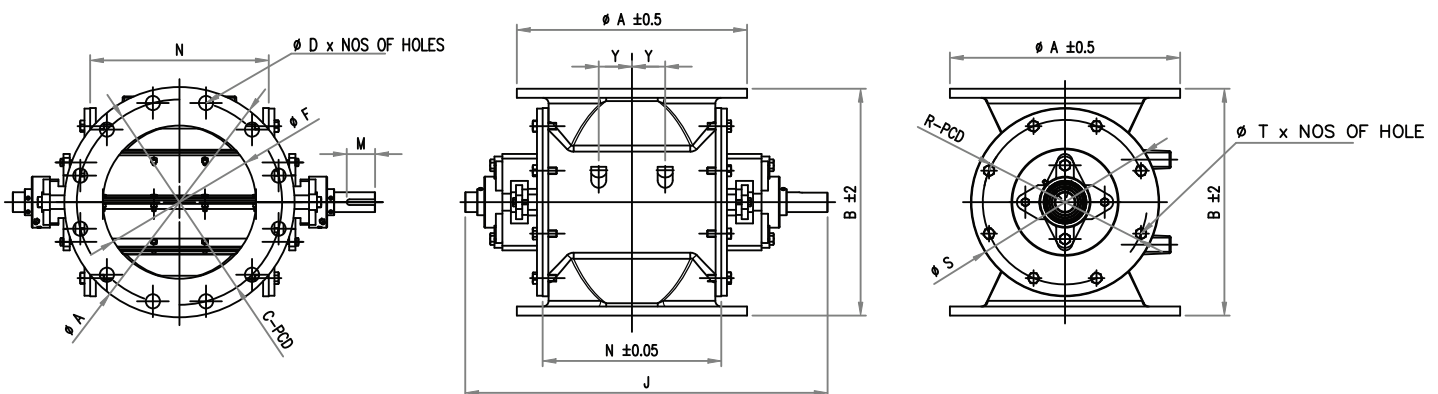
- Standard valve manufactured in cast iron Aluminium and range of stainless steel
- ANSI 150#, DIN PN10, JISTOK
Drilled flanges in accordance with DIN, ANSI, JIS standard
- Outboard bearing are standard
- High temperature execution
- Pressure difference up to 1.5 bar (21PSI)
- Open ended rotor with 8 vans

OPTIONS

- 6 van, 10 van or 12 van rotor
- Rotor design: close end, radius pocket and adjustable-tip
- Interior coatings: hard chrome, tungsten, and Teflon
- Air purge shaft sealing
- Valve housing leakage gas venting
- Accessories: Drop-out box, speed monitor, vent box

RDT Round Flange

DIMENSIONS



PARAMETERS

Sr. No	Name of RAV	ØA	ØF	ØC-PCD	ØDxNos of Holes	B	ØS	ØR-PCD	ØTxNos of Holes	J	M	N	Y
1	RAV 150	280	170	241	Ø22 x 8 Nos	280	216	178	M12 x 6 NOS	470	50	195	45
2	RAV 200	343	225	298	Ø22 x 8 Nos	326	262	230	M12 x 6 NOS	570	50	255	50
3	RAV 250	406	270	362	Ø25 x 12 Nos	400	330	290	M12 x 8 NOS	650	50	315	75
4	RAV 300	457	327	406	Ø18 x 12 Nos	470	390	350	M12 x 8 NOS	710	50	370	107
5	RAV 350	460	350	419	Ø18 x 8 Nos	525	468	410	M16 x 4 NOS & M8 x 2 NOS	740	50	400	127
6	RAV 400	578	410	540	Ø18 x 16 Nos	570	485	450	M12 x 10 NOS	950	70	462	157
7	RAV 450	635	462	578	Ø32 x 16 Nos	675	550	500	M12 x 10 NOS	1050	80	570	207
8	RAV 500	699	513	635	Ø32 x 20 Nos	730	600	550	M12 x 12 NOS	1100	80	590	217

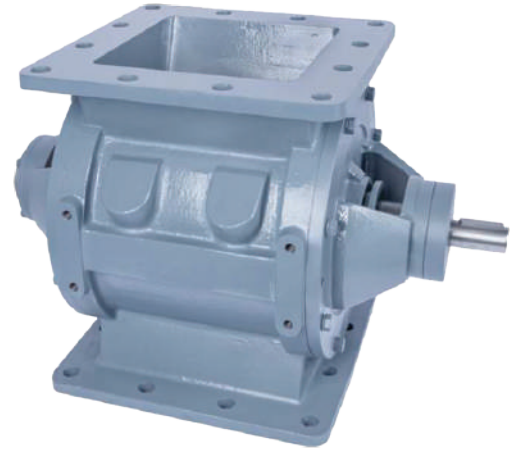
Standard pre-drilled & plug tapped holes for Cast Iron Execution.

All Dimensions are in mm.

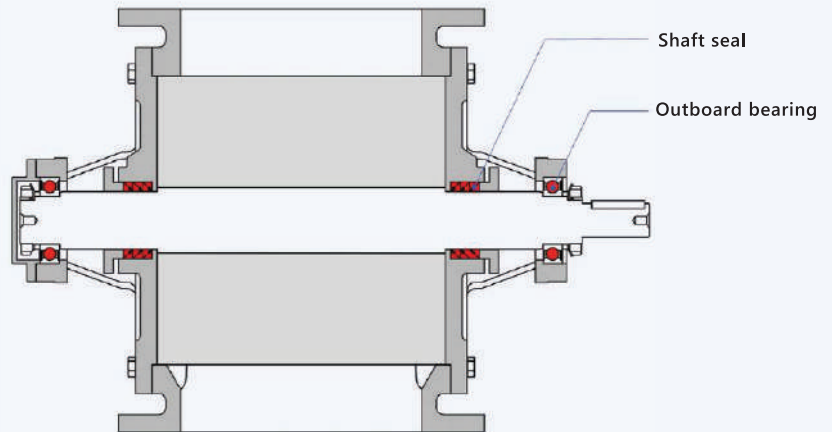
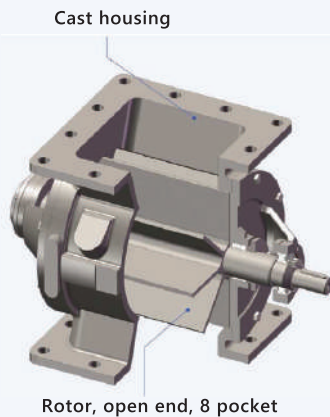
Note: We reserve the right to modify the dimensions without prior notice.

DISCHARGING AND METERING VALVE FOR POWDERS

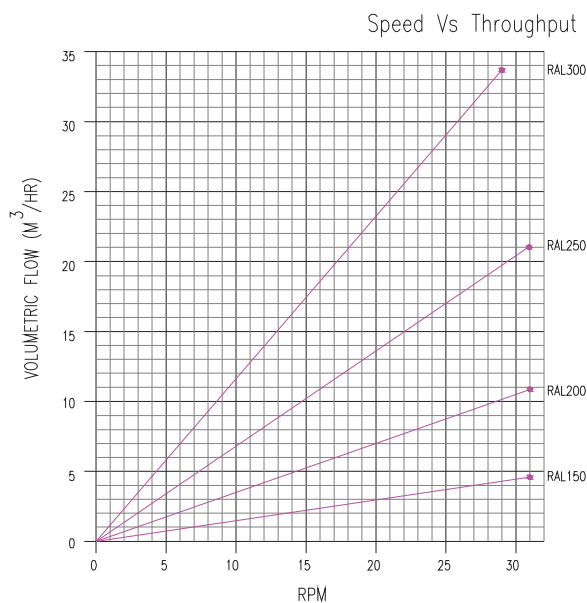
Cast Iron rotary valves rotary valves are designed for general use on pneumatic conveying systems for both metering and airlock duties, suitable for both vacuum and pressure application on a wide variety of powders and granules, with feeding shoe also suitable for feeding material into pneumatic conveying systems, operation possible without leakage gas venting.



STRUCTURES

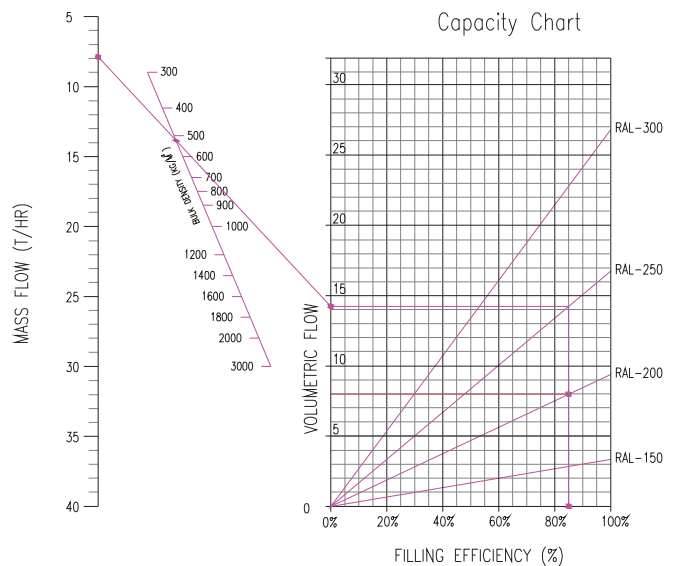


MODEL SELECTION CHART



20 RPM DEFAULT FOR RL 150/200/250/300

NOTE: THIS CHART IS PREPARED FOR THE GUIDANCE PURPOSE ONLY, CONSIDERING 100% FILLING CAPACITY



EXAMPLE: A MATERIAL WITH A BULK DENSITY OF 550KG/M³ AND REQUIRED CAPACITY OF 8.0T/HR CAN BE ACHIEVED BY RL 250 & AT 86% FILLING CAPACITY WITH 20 RPM

NOTE: THIS CHART IS PREPARED FOR THE GUIDANCE PURPOSE ONLY. MAX RPM.

FEATURES

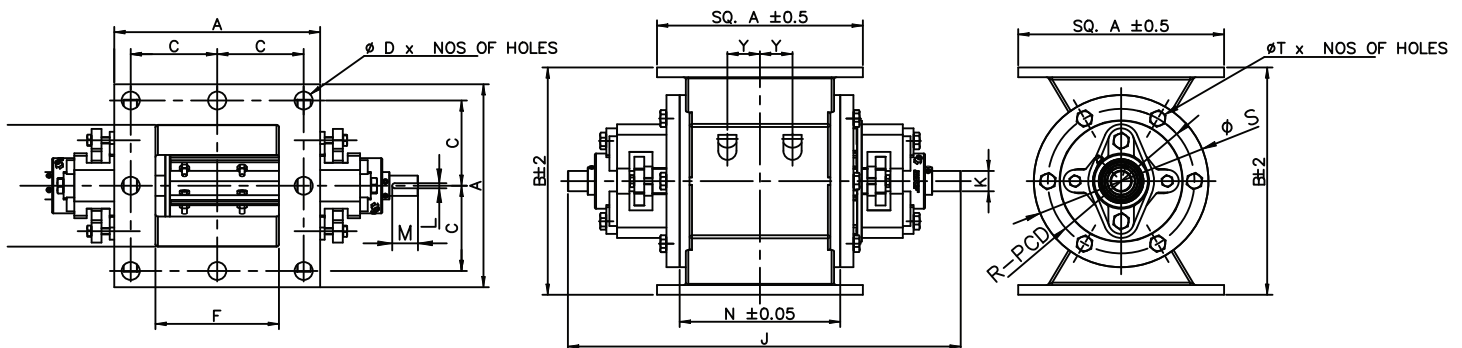
- Standard valve manufactured in cast iron, Aluminium and range of stainless steel
- Close vane tolerances ensure high feeding efficiency
- Outboard bearing are standard
- High temperature execution
- Pressure difference up to 1.5 bar (21PSI)
- Open ended rotor with 8 vans

OPTIONS

- 6 van, 10 van or 12 van rotor
- Rotor design: close end, radius pocket and adjustable-tip
- Interior coatings: hard chrome, tungsten, and Teflon
- Air purge shaft sealing
- Valve housing leakage gas venting
- Accessories: Drop-out box, speed monitor, vent box

RDT Square Flange

DIMENSIONS



PARAMETERS

Sr. No.	Name of RAV	øA	øF	C	øDxNos of Holes	B	øS	øR-PCD	øTxNos of Holes	J	M	N	Y
1	RAV 150	250	150	25x(100x100)x25	ø14 x 8 Nos	280	216	178	M12 x 6 NOS	470	50	195	45
2	RAV 200	300	200	25x(125x125)x25	ø14 x 8 Nos	326	262	230	M12 x 6 NOS	570	50	255	50
3	RAV 250	350	250	17.5x(105x105x105)x17.5	ø14 x 12 Nos	400	330	290	M12 x 8 NOS	650	50	315	75
4	RAV 300	400	300	20x(120x120x120)x20	ø14 x 12 Nos	470	390	350	M12 x 8 NOS	710	50	370	107
5	RAV 350	480	345	25x(140x150x140)x25	ø14 x 12 Nos	530	468	410	M16 x 4 NOS	740	50	410	127
6	RAV 400	550	400	35x(120x120x120)x35	ø14 x 16 Nos	580	485	445	M12 x 10 NOS	950	70	470	157
7	RAV 450	600	450	30x(180x180x180)x30	ø18 x 16 Nos	635	550	500	M12 x 10 NOS	1050	80	570	207
8	RAV 500	650	500	25x(150x150x150x150)x25	ø18 x 16 Nos	745	600	550	M12 x 10 NOS	1100	80	590	217

Standard pre-drilled & plug tapped holes for Cast Iron Execution.

All Dimensions are in mm.

Note: We reserve the right to modify the dimensions without prior notice.

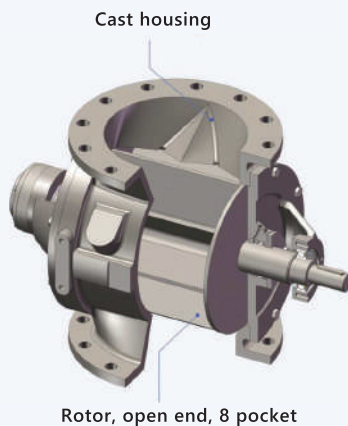
RVG - Rotary Valves for Granuals

DISCHARGING AND METERING VALVE FOR GRANULAR

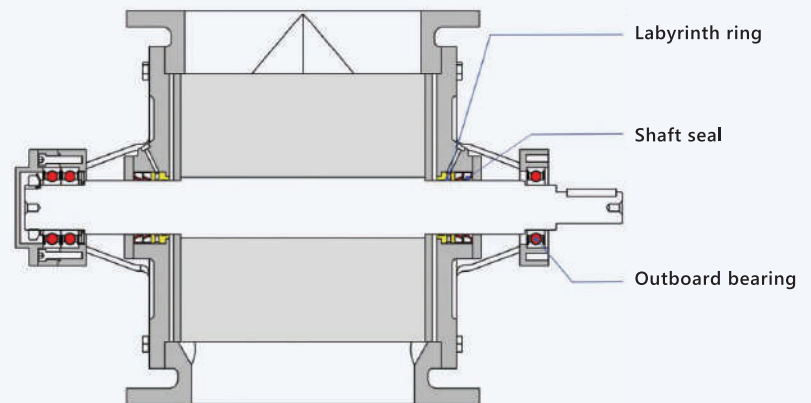
Heavy duty rotary valves are designed for general use on pneumatic conveying systems, Special inlet designed for gentle pellet handling, suitable for both vacuum and pressure application on a wide variety of granules, with feeding shoe also suitable for feeding material into pneumatic conveying systems, operation possible without leakage gas venting



STRUCTURES



Rotor, open end, 8 pocket



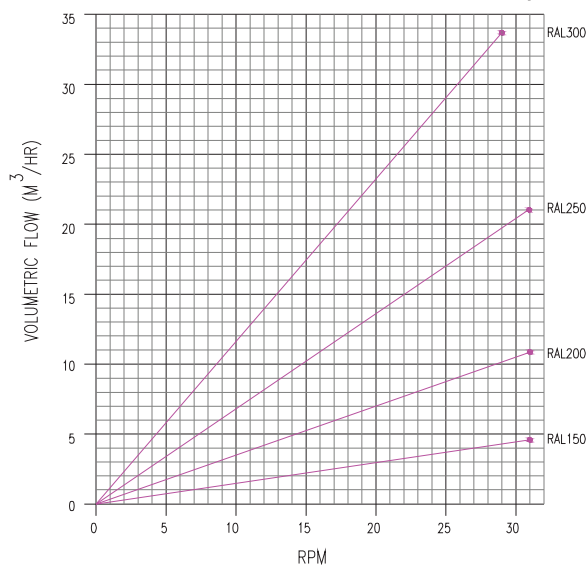
Labyrinth ring

Shaft seal

Outboard bearing

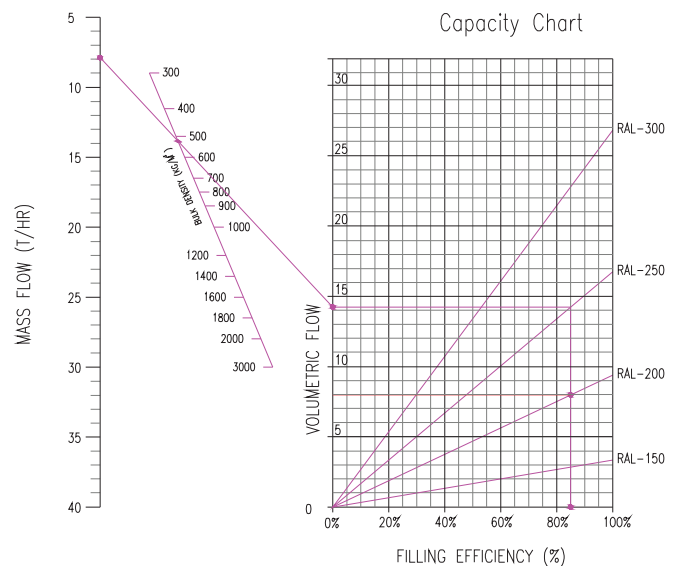
MODEL SELECTION CHART

Speed Vs Throughput



20 RPM DEFAULT FOR RL 150/200/250/300

NOTE: THIS CHART IS PREPARED FOR THE GUIDANCE PURPOSE ONLY, CONSIDERING 100% FILLING CAPACITY



EXAMPLE: A MATERIAL WITH A BULK DENSITY OF 550KG/M³ AND REQUIRED CAPACITY OF 8.0T/HR CAN BE ACHIEVED BY RL 250 & AT 86% FILLING CAPACITY WITH 20 RPM

NOTE: THIS CHART IS PREPARED FOR THE GUIDANCE PURPOSE ONLY. MAX RPM.

FEATURES

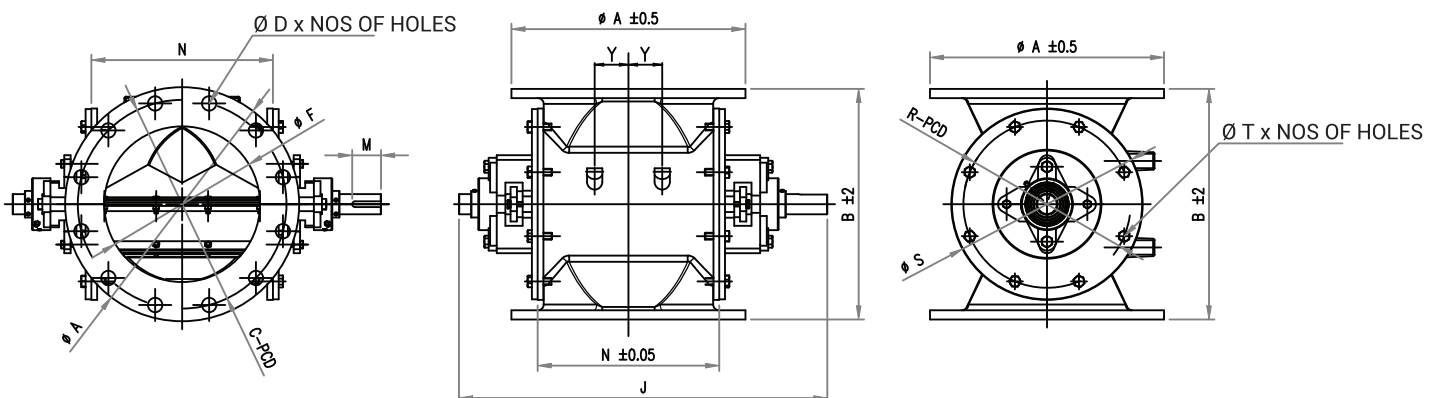
- Standard valve manufactured in SS304
- ANSI 150#, DIN PN10, JIS10K
Drilled flanges in accordance with DIN, ANSI, JIS standard
- Anti-chopping inlet for safe starting below full product
- Large inlet for high capacities
- Pressure difference up to 1.5 bar (21PSI)
- Close ended rotor with 8 vans

OPTIONS

- 6 van, 10 van or 12 van rotor
- Rotor design: radius pocket and adjustable-tip
- Interior coatings: hard chrome, tungsten, and Teflon
- Air purge shaft sealing
- Valve housing leakage gas venting
- Accessories: Drop-out box, speed monitor, vent box

RVG Round Flange

DIMENSIONS



PARAMETERS

Sr.No.	Name of RAV	ØA	ØF	ØC-PCD	ØDxNos of Holes	B	ØS	ØR-PCD	ØTxNos of Holes	J	M	N	Y
1	RAV 150	280	170	241	Ø22 x 8 Nos	280	216	178	M12 x 6 NOS	470	50	195	45
2	RAV 200	343	225	298	Ø22 x 8 Nos	326	262	230	M12 x 6 NOS	570	50	255	50
3	RAV 250	406	270	362	Ø25 x 12 Nos	400	330	290	M12 x 8 NOS	650	50	315	75
4	RAV 300	457	327	406	Ø18 x 12 Nos	470	390	350	M12 x 8 NOS	710	50	370	107
5	RAV 350	460	350	419	Ø18 x 8 Nos	525	468	410	M16 x 4 NOS & M8 x 2 NOS	740	50	400	127
6	RAV 400	578	410	540	Ø18 x 16 Nos	570	485	450	M12 x 10 NOS	950	70	462	157
7	RAV 450	635	462	578	Ø32 x 16 Nos	675	550	500	M12 x 10 NOS	1050	80	570	207
8	RAV 500	699	513	635	Ø32 x 20 Nos	730	600	550	M12 x 12 NOS	1100	80	590	217

Standard pre-drilled & plug tapped holes for Cast Iron Execution.

All Dimensions are in mm.

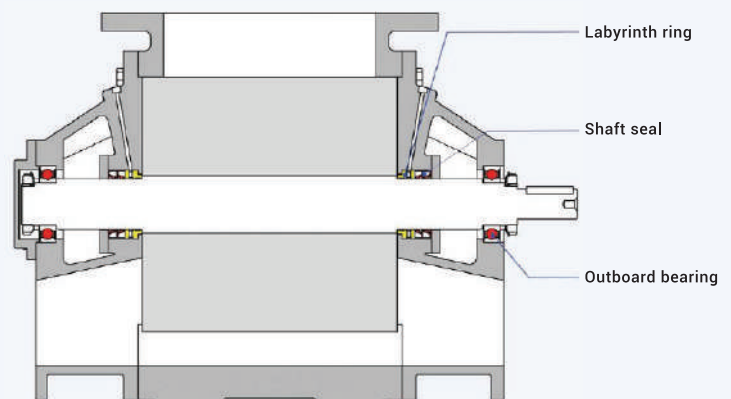
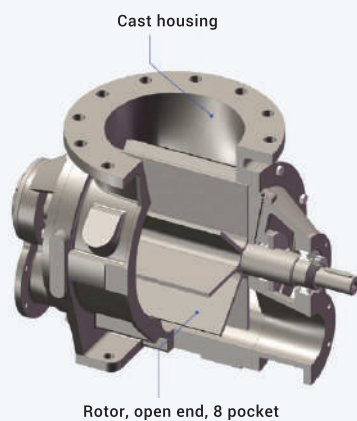
Note: We reserve the right to modify the dimensions without prior notice.

BLOW-THROUGH VALVE FOR POWDERS

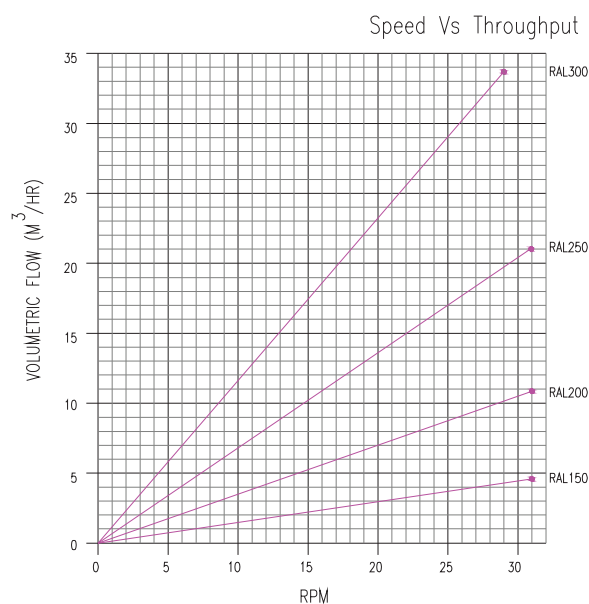
Blow-Thru rotary airlock valves are ideal for the pneumatic conveying of free-flowing material in food, grain, chemical, milling, baking, plastics and pharmaceutical applications, suitable for both vacuum and pressure application on a wide variety of powders, operation possible without leakage gas venting.



STRUCTURES

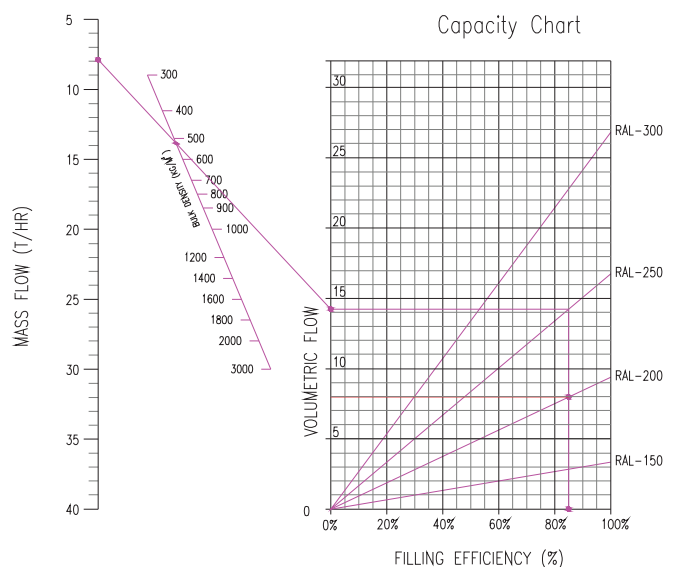


MODEL SELECTION CHART



20 RPM DEFAULT FOR RL 150/200/250/300

NOTE: THIS CHART IS PREPARED FOR THE GUIDANCE PURPOSE ONLY, CONSIDERING 100% FILLING CAPACITY



EXAMPLE: A MATERIAL WITH A BULK DENSITY OF 550KG/M³ AND REQUIRED CAPACITY OF 8.0T/HR CAN BE ACHIEVED BY RL 250 & AT 86% FILLING CAPACITY WITH 20 RPM

NOTE: THIS CHART IS PREPARED FOR THE GUIDANCE PURPOSE ONLY. MAX RPM.

FEATURES

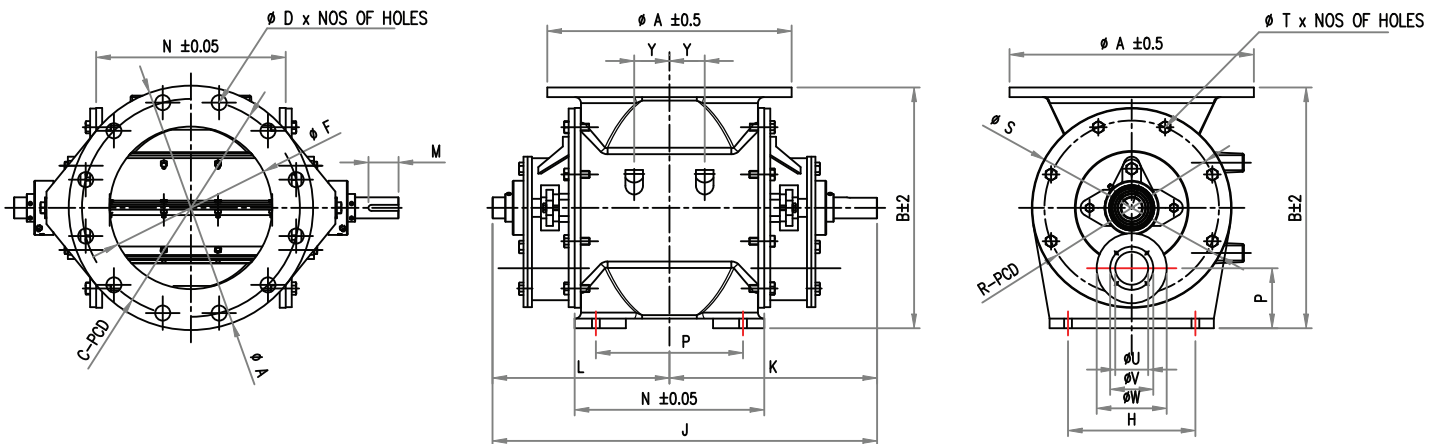
- Standard valve manufactured in cast iron range of stainless steel
- ANSI 150#, DIN PN10, JISTOK
Drilled flanges in accordance with DIN, ANSI, JIS standard
- Outboard bearing are standard
- High temperature execution
- Pressure difference up to 1.5 bar (21PSI)
- Open ended rotor with 8 vans

OPTIONS

- 6 van, 10 van or 12 van rotor
- Rotor design: close end, radius pocket and adjustable-tip
- Interior coatings: hard chrome, tungsten, and Teflon
- Air purge shaft sealing
- Valve housing leakage gas venting
- Accessories: Drop-out box, speed monitor, vent box

RBT Round Flange

DIMENSIONS



PARAMETERS

Sr. No.	Name of RAV	øA	øF	øC-PCD	øDxNos of Holes	B	øS	øR-PCD	øTxNos of Holes	J	M	N	Y	L	K	P	øU	øV	øW	H	P
1	RAV 150	280	170	241	ø22 x 8 Nos	280	216	178	M12 x 6 NOS	470	50	195	45	225	275	100	65	110	130	130	100
2	RAV 200	343	225	298	ø22 x 8 Nos	326	262	230	M12 x 6 NOS	570	50	255	50	255	315	130	80	130	150	160	130
3	RAV 250	406	270	362	ø25 x 12 Nos	400	330	290	M12 x 8 NOS	650	50	315	75	300	370	150	100	155	180	200	150
4	RAV 300	457	327	406	ø18 x 12 Nos	470	390	350	M12 x 8 NOS	710	50	370	107	340	420	180	125	180	210	240	180

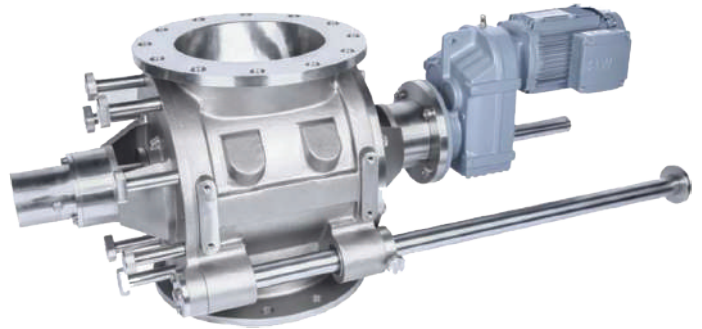
Standard pre-drilled & plug tapped holes for Cast Iron Execution.

All Dimensions are in mm.

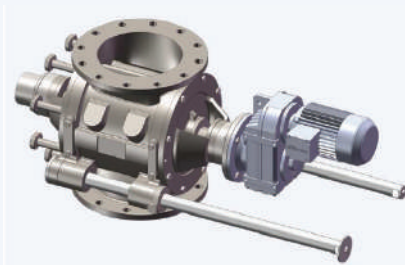
Note: We reserve the right to modify the dimensions without prior notice.

ROTECH QUICK CLEANING VALVE FOR POWDERS

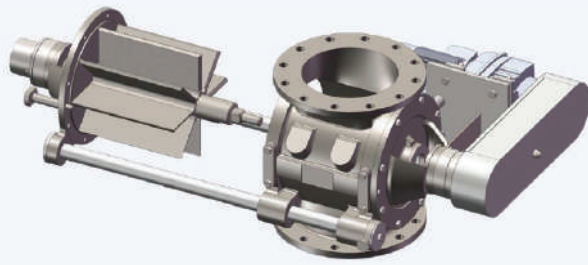
Easy Slide Rotor enables cleaning of the heavy duty rotary valves without tools or lifting equipment. Specially designed for dairy, food, pharmaceutical, nutritional products and other ingredients, with feeding shoe also suit- able for feeding material into pneumatic conveying systems, operation possible without leakage gas venting.



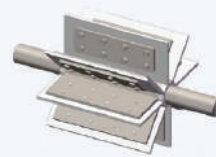
STRUCTURES



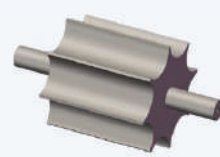
Radius Pocket Rotor



Replaceable Blades Rotor



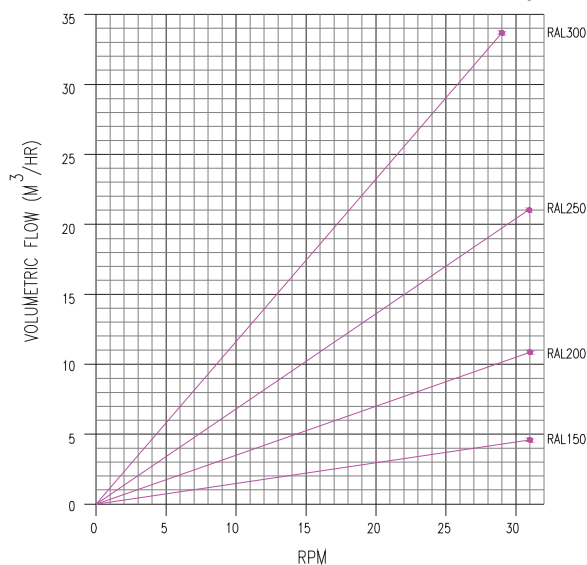
Flex Tip Style Rotor



Scalloped pocket

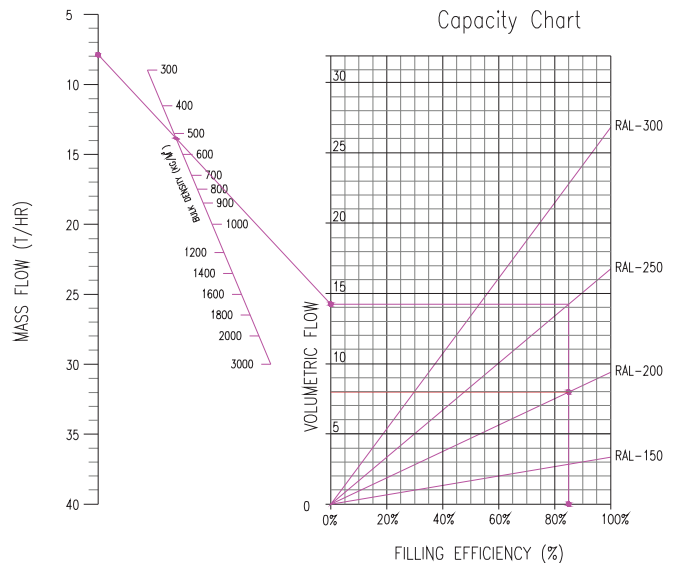
MODEL SELECTION CHART

Speed Vs Throughput



20 RPM DEFAULT FOR RL 150/200/250/300

NOTE: THIS CHART IS PREPARED FOR THE GUIDANCE PURPOSE ONLY, CONSIDERING 100% FILLING CAPACITY



EXAMPLE: A MATERIAL WITH A BULK DENSITY OF 550KG/M³ AND REQUIRED CAPACITY OF 8.0T/HR CAN BE ACHIEVED BY RL 250 & AT 86% FILLING CAPACITY WITH 20 RPM

NOTE: THIS CHART IS PREPARED FOR THE GUIDANCE PURPOSE ONLY. MAX RPM.

FEATURES

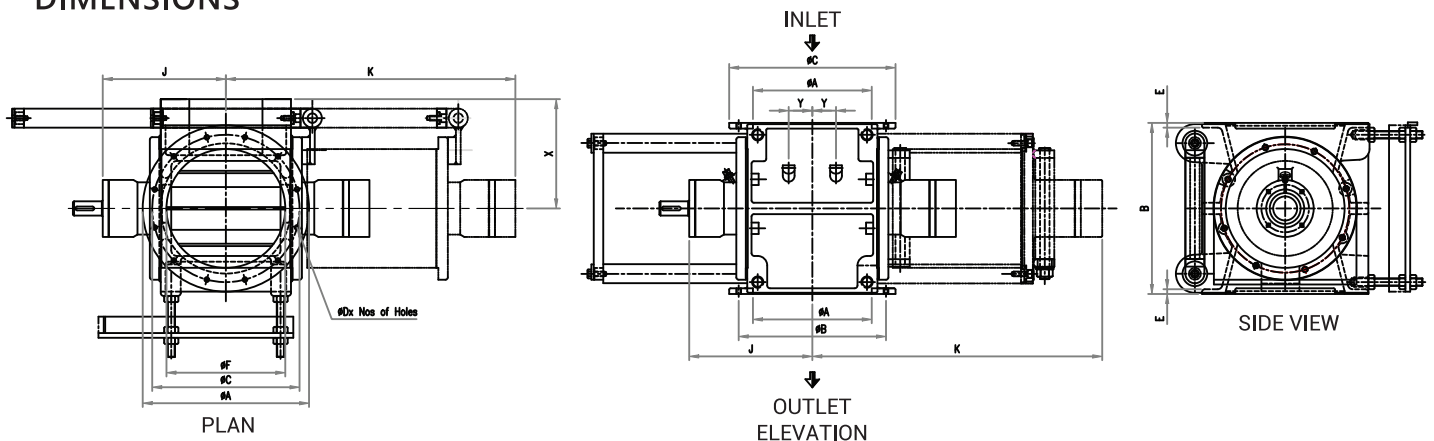
- Standard valve manufactured in SS304 / WCB / MS / CI / SS316
- ANSI 150#, DIN PN10, JIS10K
Drilled flanges in accordance with DIN, ANSI, JIS standard
- Heavy duty slide rail assembly
- Twin track linear bearing assembly
- Pressure difference up to 1.5 bar (21PSI)
- Open ended rotor with 8 vans

OPTIONS

- 6 van, 10 van or 12 van rotor
- Rotor design: close end, radius pocket and adjustable-tip
- Interior coatings: hard chrome, tungsten, and Teflon
- Air purge shaft sealing
- Valve housing leakage gas venting
- Accessories: Drop-out box, speed monitor, vent box

RQC Round Flange

DIMENSIONS



PARAMETERS

Sr.No.	Name of RAV	ϕA	ϕF	ϕC -PCD	$\phi D \times \text{Nos of Holes}$	E	B	J	K	Y	X
1	RAV 150	280	170	241	$\phi 22 \times 8$ Nos	15	280	300	885	45	152
2	RAV 200	343	225	298	$\phi 22 \times 8$ Nos	15	326	330	945	50	187
3	RAV 250	406	270	362	$\phi 25 \times 12$ Nos	18	400	380	1040	75	220
4	RAV 300	457	327	406	$\phi 18 \times 12$ Nos	23	470	435	1180	107	259

Standard pre-drilled & plug tapped holes for Cast Iron Execution.

All Dimensions are in mm.

Note: We reserve the right to modify the dimensions without prior notice.

KNIFE GATE VALVE FOR SOLID MATERIALS

Rotech Air-Operated Dust-Tight Knife Gates add an extra dimension of control to bulk material handling systems. Designed for use in free-flowing solids, granules, or powder form, they can be installed to control flow from outlets of hoppers, silos, mixers, screw conveyors, truck train or ship load-out systems, etc.

Built of sturdy welded steel, Rotech dust-tight Knife gate valves provide long life and dependable service. They are economical in cost and easily installed. Completely dust-tight when installed, they require no or minimum caulking.

Special construction materials such as stainless steel, aluminum, abrasion-resistant metals, and special coatings are available.



FEATURES

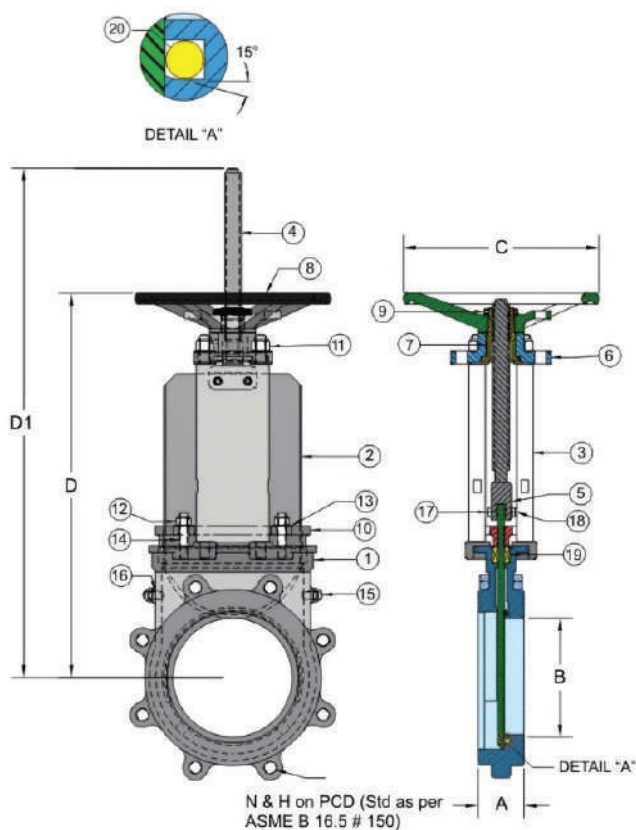
- Single Piece Cast Body
- Uni-Directional Valve / Bi-Directional Valve
- Metal / Resilient seating
- Design as per MSS SP 81
- Simple compact design and construction
- Manual/Pneumatic/Hydraulic / Motorised actuation
- Maximum Operating Pressure: 150 psi
- Hardened beveled gate and hardened seat for shearing and sealing

PARAMETERS

Inches	2	3	4	5	6	8	10	12	14	16	18	20	24
MM	50	75	100	125	150	200	250	300	350	400	450	500	600
A (F-F)	48	51	51	57	57	70	70	76	76	89	89	114	114
B	40	60	90	102	130	180	230	280	329	380	430	478	575
N (No of Holes)	4	4	8	8	8	8	12	12	12	16	16	20	20
H (Tap) mm	M 16	M 16	M 16	M 16	M 16	M 16	M 20	M 20	M 20	M 24	M 24	M 24	M 24
H (Tap) UNC	5/8 - 11	5/8 - 11	5/8 - 11	3/4 - 10	3/4 - 10	3/4 - 10	7/8 - 9	7/8 - 9	1 - 8	1 - 8	1, 1/8 - 7	1, 1/8 - 7	1, 1/4 - 7
Free Hole dia	18	18	18	22	22	22	26	26	28.5	28.5	31.5	31.5	36
PCD	120.5	152.5	190.5	216	241.5	298.5	362	432	476	540	578	635	749.5
C	200	200	200	250	250	300	400	400	450	450	500	600	600
D	280	330	368	418	448	564	690	750	925	1105	1215	1350	1515
DI	330	405	468	543	598	764	940	1050	1275	1505	1665	1850	2115

Recommend to use Gear Wheel; Handwheel available though

DIMENSIONS

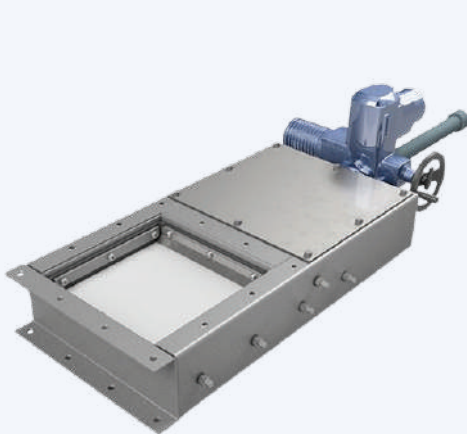
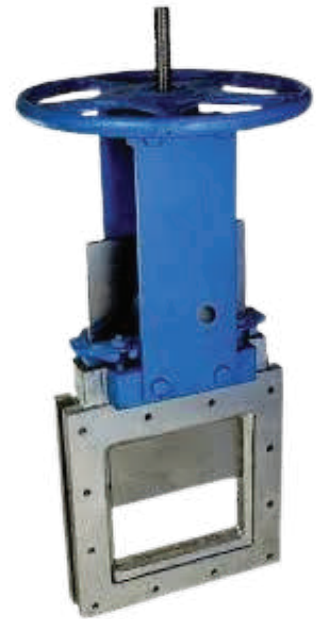


No.	PART NAME	SPECIFICATIONS
1	BODY	CI/WCB/SS304/SS316/HASTE C276
2	GATE	SS 304/316/316L
3	YOKE	MS-POWDER COATED
4	STEM	SS/EN8
5	FORK	FORGED / IS 2062
6	BRIDGE	ALUMINIUM, MS
7	YOKE SLEEVE	BRONZE
8	HANDWHEEL	CI
9	HANDWHEEL NUT	MS
10	GLAND	CI/WCB/SS304/SS316
11	BRIDGE NYLOCK NUT	STAINLESS STEEL
12	GLAND NYLOCK NUT	STAINLESS STEEL
13	GLAND WASHER	STAINLESS STEEL
14	GLAND STUD	STAINLESS STEEL
17	COUPLING BOLT	18.8 STAINLESS STEEL
18	COUPLING NYLOCK NUT	18.8 STAINLESS STEEL
19	PACKING	PTFE ROPE / GRAPHITE
20	O-RING	VITON®/EPDM/SILICON / PTFE

SLIDE GATE VALVE FOR SOLID MATERIALS

Rotech Slide Gate Valve is a versatile and reliable equipment specifically designed to seamlessly fit into systems handling dry bulk materials. It is designed to highest safety standards of operators and technicians. The slide plate of the valve, being the critical component that interacts directly with the material flow, is thoughtfully designed to remain unexposed.

Furthermore, this Slide gate valve plays a critical role in industries where solid, granular, or powdered pellet materials need to be reliably discharged from silos, bins, cyclones, or hoppers, under positive or negative pressure conditions. Whether it is in the rigorous environment of a flour mill, the demanding landscape of a cement plant, or the precise operations of a pharmaceutical facility, Rotech Slide Gate Valve proves to be an indispensable asset, delivering unparalleled control and reliability where it matters most.

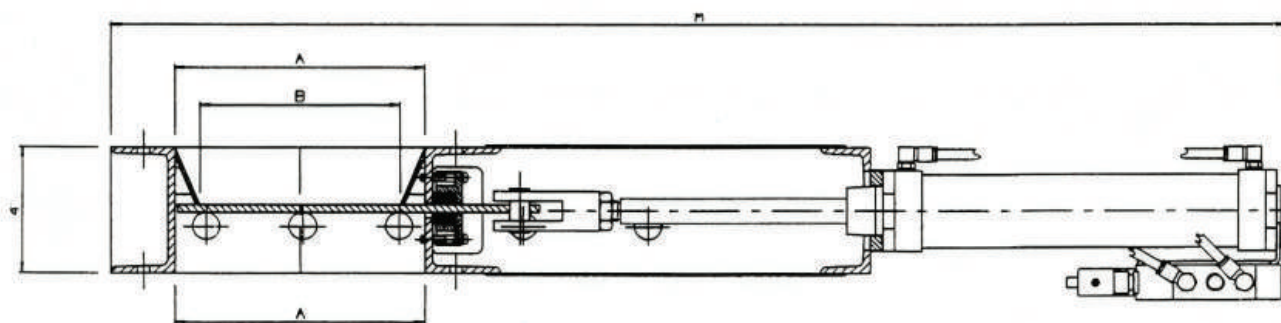
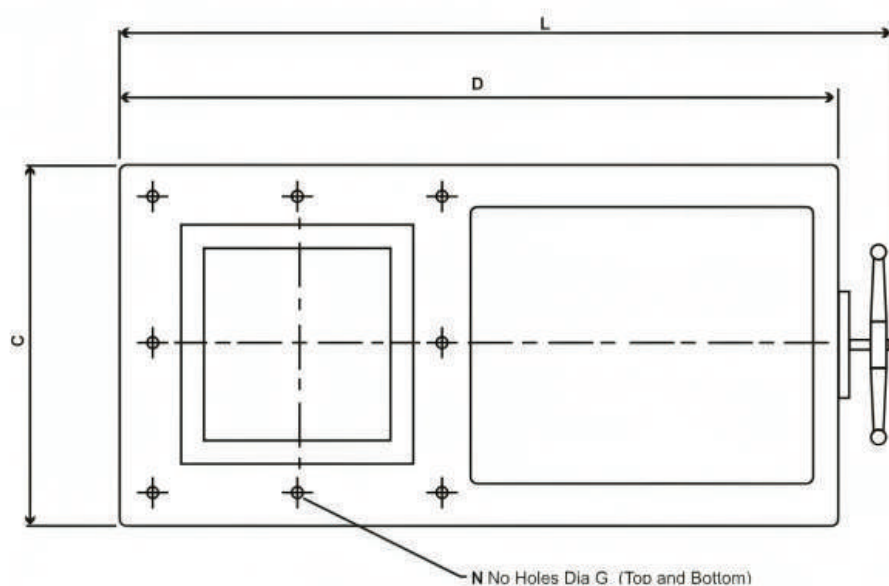


FEATURES

- Full bore opening offering free flow of product without any restriction.
- Ideal for dry bulk solids like powder, grains, pellets.
- Rising / Non-rising spindle No Jamming of any parts.
- Hardened beveled gate and hardened seat for shearing and sealing
- Close tolerance machining between bodies Leak Tight.
- Simple compact design and construction Single frame/ Full Frame design
- Manual / Pneumatic / Hydraulic / Motorised actuation

SLIDE GATE VALVE

DIMENSIONS



PARAMETERS

SIZE	ASQ	BSQ	C	D	N	G (Dia)	L	M
ISO	ISO	115	254	508	8	12	630	800
200	200	165	301	610	8	12	730	953
250	250	215	352	711	8	12	830	1105
300	300	260	403	800	16	16	911	1251
350	350	310	451	900	16	16	1010	1403
400	400	360	502	1035	16	18	1143	1549
450	450	405	552	1137	16	18	1245	1702
500	500	455	603	1238	16	18	1346	1851

Our Esteemed Clients



BOROSIL



ENGINEERING SYSTEMS PVT. LTD.



www.rotechindia.com

Head Office / Factory :

📍 Plot No. A-18, Gat No. 1325, Sonawane Wasti Road, Chikhali, Pune - 411062, MH, India.

☎ +91 9923112363/ 9765738941

✉ sales@rotechindia.com / info@rotechindia.com



SCAN QR
TO ADD CONTACT



SCAN QR TO DOWNLOAD
COMPANY PROFILE

